



Thank you for considering Ready Seal for your exterior wood projects. We want you to get the best results possible, so if you still have questions or need additional information after reading the contents of this document, ***please visit our website or contact us @ 888-782-4648 for additional product support.***

THE KEY TO SUCCESS with READY SEAL:

This document contains multiple sections that address a variety of topics. Proper ***wood preparation*** and measuring the ***moisture content*** of the wood prior to application are ***the two most critical steps*** to getting the best results. ****See the WOOD PREP and MOISTURE CONTENT sections of this document.***

ABOUT READY SEAL

Ready Seal has been the product of choice for professionals since 1992. What used to be available to contractors only is now available to all.

Ready Seal is a genuine semi-transparent stain and seal that penetrates into the wood rather than sitting on the surface. It is a proprietary blend of natural resins, trans-oxide pigments (which provide UV protection), and some of the finest oils in the industry. There is ***no linseed oil***, which has been known to promote algae and mildew growth.

It is ideal for fences, decks, cedar siding, log homes, wooden garage doors, children's play-sets, equestrian centers, boat docks, pergolas, gazebos, cabanas, pavilions, and other outdoor wood structures. It is also safe to use indoors and frequently used for interior projects including cabinets, floors & furniture.

Ready Seal can be used on most wood types, such as pine (regular and pressure-treated), cedar, tiger, cypress, redwood, walnut, cherry, hickory and oak, and even some exotics such as teak, ipê, massaranduba, cumara, and garapa, although there are some nuances with these exotic woods, so please contact our office at 888-782-4648 if you want additional information on these.

READY SEAL WARRANTY

Ready Seal warrants the quality of the contents of the container, so if it is determined that there is a defect in the product itself, replacement product or refund of purchase price will be provided at Ready Seal's discretion. Labor costs are not covered by this warranty.

Ready Seal does not guarantee the length of time the product will last, as there are a variety of factors that can affect that, including the age and type of wood, the weather, the color that is used (darker tones last longer than lighter), etc. We do, however, estimate that in most cases, Ready Seal will provide protection:

- 1-4 years for horizontal surfaces (like a deck or dock)
- 2-5 years for vertical surfaces (like a fence or pergola)

In addition, no guarantee of results is offered, expressed, or implied. Ready Seal has no control over the surface preparation of the wood and/or application techniques, which is imperative to the success and longevity on the structure, so we encourage customers to read through this document completely to ensure they are following all manufacturer recommendations, and call our office if they have questions.



WOOD PREP

The first requirement for proper wood preparation is that the wood is clean and bare, free from any previous product. If your wood is:

- **Brand new, rough-cut lumber:** no special prep needed
- **Brand new, smooth-milled lumber (such as deck boards or furniture):** there is an invisible mill glaze coating on this wood, which will inhibit the penetration of Ready Seal into the wood. This must be addressed before successful application. Ready Seal recommends using a 50% bleach/50% water solution, spray on the surface of the wood, let it sit for 15-20 minutes, then use a pressure washer (1000PSI or less), or a garden hose with a jet sprayer attached, and rinse the wood well.
- **Older wood (more than a year old) with no previous product, but grey from age:** Ready Seal recommends using a 50% bleach/50% water solution, spray on the surface of the wood, let it sit for 15-20 minutes, then rinse the wood well with a garden hose. (*If there is not very much grey, you can decrease the bleach ratio. If there is a lot of grey, you can increase the bleach ratio).
- **Older wood (more than a year old) with residual product (other than Ready Seal):** wood must be stripped, neutralized, and then brightened to get down to clean bare wood. This process is outlined on a separate page in this document.
- **Older wood (more than a year old) with Ready Seal previously applied:** if you started with Ready Seal on clean bare wood before, maintenance is easy. The only prep needed in this case is a light cleaning. Mix 25% bleach/75% water in a pump-up sprayer, spray on the surface of the wood, let it sit for 15-20 minutes, then rinse with a garden hose. If there are any spots with mold, mildew, and algae growing, you can use a stainless steel swimming pool algae brush to gently score that area and rinse those spots away first. The bleach/water solution will kill and marginalize anything else that may be growing.

MOISTURE CONTENT

Ready Seal is an oil-based semi-transparent stain. Since oil and water do not mix, the most important requirement for successful Ready Seal application is to **ensure the wood is completely dry**. This can NOT be definitively determined just by touching the wood or by simply allowing a certain number of hours, because different regions have higher humidity, colder temperatures, variable weather conditions, or the wood may be very porous and holding onto moisture longer than a denser wood.

Once the appropriate **Wood Prep** protocol outlined above has been followed (whichever one is appropriate for your specific project), then the critical thing that needs to happen is to check the moisture content of the wood. Ready Seal highly recommends using a wood moisture meter to ascertain this measurement. A moisture meter can be purchased online at most paint, lumber, or hardware stores. They range in price from \$20-\$200 for the contractor-grade tools. The entry-level models will work fine for most applications. This is a wise investment, because you will re-use this tool every time you re-apply Ready Seal. The 12% or less moisture content rule is true for the first application, as well as every future application. (note: high humidity areas may only be able to get down to 14-15%, so that is acceptable in those areas, but the wood may only take one coat....follow the two-coat verification to test).

Spot check several areas of the wood- corners, around knot holes, top, bottom, etc. Once you've prepped the wood and your structure is getting 12% or less moisture content readings on the moisture meter, then it is ready to have Ready Seal applied.

***Caution:** Applying Ready Seal on wood that is not dried as recommended may lead to the stain not penetrating into the wood, as it should, and it may remain on the surface, making it vulnerable to washing away if it rains, or drying on the surface and flaking/peeling off later. This is precisely what Ready Seal is designed NOT to do. But it only works as intended if these guidelines are followed.



COLOR OPTIONS

Ready Seal is available in the following 8 tones:



*Final tones will vary depending on the age of the wood, the type of the wood, and the texture of the wood. For example, Dark Walnut on rough-cut cedar may look different than Dark Walnut on pressure-treated pine. As such, Ready Seal offers liquid samples of the colors so you can test each color on a spare piece of wood for your specific project if you choose. Samples can be ordered [HERE](#), or your local paint or hardware store may have some on hand. In addition, visit our [PRODUCT GALLERY](#) to see more photos.

ONE OR TWO COATS?

Ready Seal is intended to be a two-coat application, and the representation of tones above and on the Ready Seal website is indicative of two coats of Ready Seal. However, because Ready Seal is not a paint or coating that covers the surface of the wood, but rather penetrates down into the wood pores, there are some projects where the wood simply will not take a second coat, including brand new, smooth-milled wood (such as deck boards or raw furniture), as well as some exotic hardwoods. Both of these wood categories are very dense, and it takes several years for dense wood to open up enough to take a second coat. Doing a pre-treatment with a 50/50 bleach-water solution (spray on, let sit for 30 minutes, and rinse well) can serve to open up those wood pores a little. If this is done, the wood must be allowed to dry down to 12% or less before applying Ready Seal.

Two Coat Verification Test Method

Not sure if your project will take two coats? Here is how you can tell:

After applying the 1st coat and allowing 1 hour to dry, then apply a few drops of Ready Seal in a few test areas. Let those drops sit undisturbed for 30 to 45 minutes, and then wipe your fingers or a paper towel across test areas. If you see nothing at all or just clear oil, the pigment has penetrated in and the wood is ready for a second coat. If you see color/pigment when you, you will have to wait a year or more for subsequent application.

RECOMMENDED APPLICATION TOOLS

- Ready Seal can be applied with any tool you are comfortable with:
- Brush/Roller: any paint brush or standard paint rollers with any nap (3/8" nap is typical)
- Pump-Up Garden Sprayer: any mid-range or higher quality sprayer
- Airless Sprayer: any mid-range or higher quality sprayer; 40-60 PSI, 0.18-0.23 GPM range and 211 or 213 spray tip recommended.

CLEAN-UP: tools can be cleaned with mineral spirits when finished.

WHAT PRECAUTIONS DO I NEED TO TAKE?

- If using a sprayer, do not use on a windy or breezy day, as overspray may inadvertently travel to nearby structures, vehicles, windows, stonework, or furniture, and it is difficult to remove if not caught early. You may want to wait for a less windy day.
- Cover all nearby plants and vegetation with plastic drop cloth before applying Ready Seal to protect against drips and overspray. Be cautious of extreme heat- plastic dropcloths on hot summer days can burn and/or kill vegetation and plants.
- Prior to staining, you can generously wet down any nearby concrete or stone or other surfaces. Because oil is lighter than water, this gives you a window of opportunity to address any spills, drips, or overspray, as the water will delay the penetration of Ready Seal into a porous surface. Rinsing areas again after staining washes away the floating oils. Don't allow water to evaporate or Ready Seal can stain concrete.
- It is always recommended to protect skin and eyes when working with any chemical products.

HOW MUCH STAIN DO I NEED?

Below is an estimate of product coverage.

<u>Wood Type</u>	<u>SqFt/Gal</u>
Spruce Fence	150
Cedar Siding	150
Cedar Fence	125
Cedar Siding (Rough)	125
Pine Fence	150
Pine Siding	170
Treated Pine Fence	150
Cedar Shingles	150
Treated Pine Deck	150
Cedar Deck	150

MORE TIPS AND HINTS

- Mix, shake, and/or remove lids to stir well before each use. Mix multiple containers together to ensure color consistency.
- Pour 5-gallon buckets with the spout at the 12 o'clock position to avoid sloshing and spills
- When pouring stain into sprayers or other containers, always pour while standing over grass or a tarp, not over driveways or concrete.
- Use cardboard or spray shields to help control overspray.
- Brush areas of fences or decks that are close to a house or garage first. Brushing out a few feet allows for prevention of overspray on brick or siding.
- Always keep a gallon of paint thinner or mineral spirits close by to clean any spills immediately.
- When spraying fences, buy a four foot wide roll of construction paper and lay sections of it right up to the base of the fence
- If you have leftover product, repackage it into smaller containers to get all the air out to avoid separation of oils and pigments



FAQs

What temperature restrictions does Ready Seal have? There are no temperature restrictions. Ready Seal can be applied in any temperature, as well as in direct sunlight.

Can I stain today if it's supposed to rain tomorrow? As long as the Wood Prep and Moisture Content rules outlined above are followed (wood is clean, bare, and dry down to 12% or less), you can stain today, and it can rain within hours and the Ready Seal will not wash away.

Should I sand the wood before I apply Ready Seal? It is not recommended to sand the wood before application. Ready Seal is a penetrating stain that absorbs down into the wood pores. Sanding closes those wood pores, meaning the product has less room to get into the wood. If you sand the wood, be aware that you will likely only get one light coat of product to go in. You can follow the Two Coat Verification Test Method above to see if it will take a second coat.

Where can I buy Ready Seal? Ready Seal is only sold through our distributors, and you can see if there are any in your area at <https://www.readyseal.com/find-a-store/>. If there is no one in your area, you can order online from various paint and hardware retailers for shipment to your home. You can also call our office if you need help finding a source. 1-888-782-4648

Can I use Ready Seal on a log home? Yes- absolutely! Many customers have been very pleased with Ready Seal on their log homes. Please call our office for specific guidance on this particular application, as there are some nuances to the wood prep.

How long does Ready Seal take to dry? And when can I walk on it? You can walk on the deck while you are staining- it absorbs into the wood, self-levels, and there is no risk of leaving footprints on it. But you may get product on your shoes, so don't track it into your home or onto the surrounding concrete/stone. If the Wood Prep and Moisture Content protocols outlined above are followed, the wood will dry quickly (within hours), and you can replace furniture right away, but wait a couple days before adding any textiles (rugs, pillows, etc). Once it is dry, it will take up to 14 days to fully cure and reach its final tone.

My deck still looks wet and oily after it was stained 3 days ago, what should I do? This may indicate that the wood is saturated, and it has absorbed all the product that it can. In this case, you can take a rag with some mineral spirits on it and wipe down the surface. This will absorb up any excess oils and pigment, but will not affect the product that has absorbed into the wood.

Can I use Ready Seal on interior projects? Yes! Please call our office to get information on your specific application, and we are happy to provide guidance.

Is Ready Seal safe to use on picnic tables or kids' swing sets? Ready Seal has no carcinogens, and when it dries, your substrate (e.g. picnic table, children's play set, outdoor furniture) will be suitable of normal use.

How do I clean my brush/roller/sprayer after I finish application? Mineral spirits or paint thinner will clean tools.

Where can I see photos of Ready Seal on actual projects? Visit our online photo gallery [HERE](#).





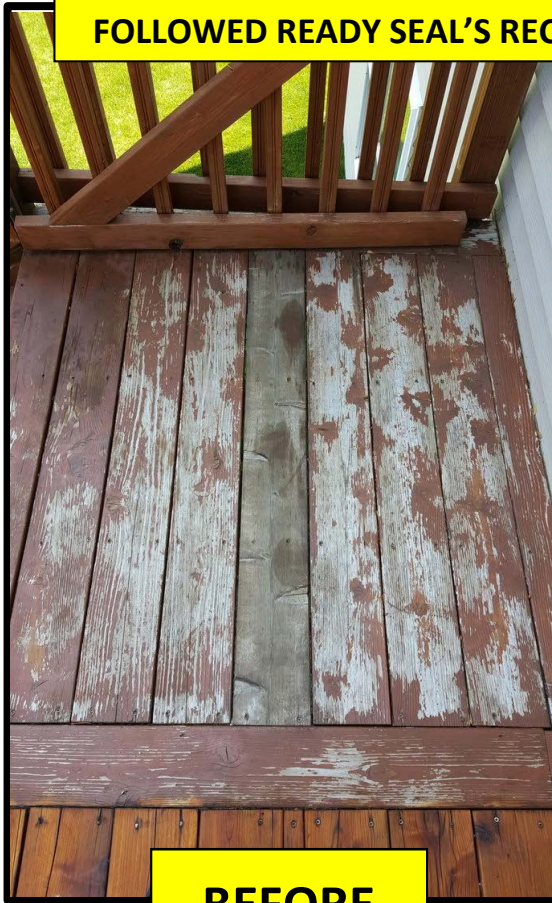
DIRECTIONS FOR STRIPPING WOOD AND PREPARING FOR APPLICATION OF READY SEAL

1. Apply a high quality wood stripper to the entire area that you want stripped (follow the directions on the product you choose). This will start a chemical process that will chemically burn the wood, turning it dark brown- almost black- likely within minutes. You can use a brush to lightly scrub with the grain and "help the process" in places where there is still paint or stain remaining.
2. Powerwash away all the stripper and its residue (make sure pressure washer is set to 1200PSI or less, and move in the direction of the boards, not zig-zag across the boards)
3. Sweep or blow away excess moisture on the surface
4. Prepare the Oxalic Acid* following the instructions below, and then apply to entire area with a pump up garden sprayer to neutralize the stripper. **DO NOT RINSE**
5. Allow to dry for a day or two, with the goal to get it down to 12-15% moisture
6. With a pump-up garden sprayer, mix 50% bleach - 50% water, spray over entire surface to do one final brightening and kill any mold and mildew under the surface of the wood.
7. Let the bleach/water sit on the surface for 15 minutes, then rinse with a garden hose
8. Once again, allow the wood to dry down to 12% moisture or less. This may take days, depending on the weather.
9. Once your wood is at 12% moisture or less, apply Ready Seal in your choice of 8 beautiful tones. The darker the tone, the longer "life" you'll get out of it—as the pigment gives you UV protection.
10. Call us at 1.888.782.4648 if you have any questions or need guidance on any of these steps.

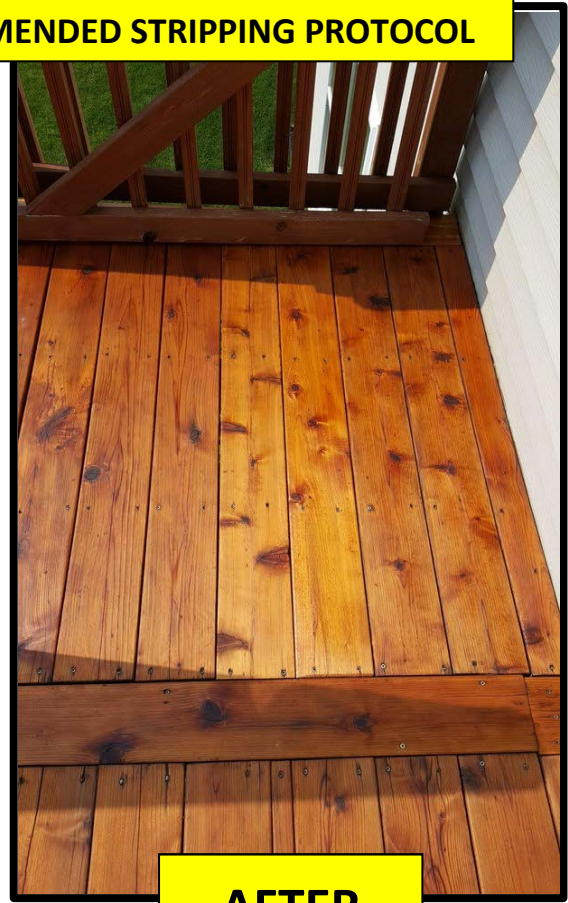
***Oxalic Acid:** Mix 0.25-0.50 lbs of granulated/powdered Oxalic Acid to 1 gallon of HOT water. Spray onto the surface to neutralize a stripper; it also lifts mildew stains/acid rain affects; lifts leaching/Oxidizing Fastner Stains & brightens the wood. Let this application dry and dissipate-- do not rinse!

**FOR PHOTOS OF A PROJECT THAT FOLLOWED
THIS PROTOCOL, SEE NEXT PAGE.**

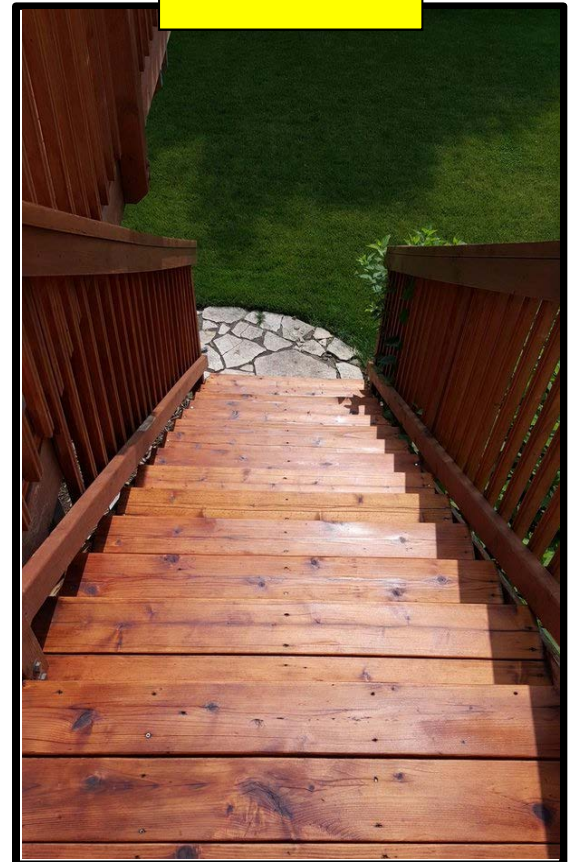
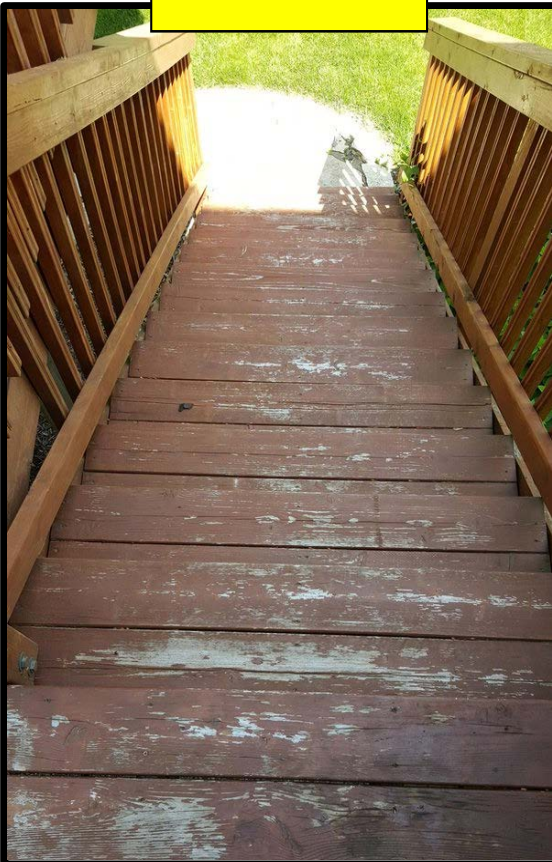
**BEAUTIFUL RESULTS OF A CUSTOMER IN NEW YORK WHO
FOLLOWED READY SEAL'S RECOMMENDED STRIPPING PROTOCOL**



BEFORE



AFTER





STAIN AND SEALER FOR WOOD

www.readyseal.com

The Ready Seal® Advantage

- No Laps, Runs or Streaks
- No Back Brushing Required
- No Cracking, Chipping, Flaking or Peeling
- Can withstand rain within minutes of application
- Easy Maintenance - No sanding or stripping required for reapplication
- Contains no linseed or vegetable oils that promote algae and fungus growth in wood
- Can be applied in any temperature
- Does not get tacky or sticky
- Biodegradable
- Easy to Apply - can be applied with a simple garden sprayer, a roller, brush or airless sprayer
- Penetrating wood stain and sealer
- Can be applied to all types of hard or soft wood, including rough and smooth surfaces
- Dries to a durable, flat, natural finish
- Can be applied wet-on-wet OR wet-on-dry with no lapping
- Can be applied in the direct sunlight
- No mixing or stirring required during application of the product
- Repels moisture
- Low odor & mildew resistant
- Ultimate UV protection

